

4 October 2010

---

## Agreement

### **Concerning the Adoption of Uniform Technical Prescriptions for Wheeled Vehicles, Equipment and Parts which can be Fitted and/or be Used on Wheeled Vehicles and the Conditions for Reciprocal Recognition of Approvals Granted on the Basis of these Prescriptions\***

(Revision 2, including the amendments which entered into force on 16 October 1995)

---

## **Addendum 109: Regulation No. 110**

### **Revision 1 – Amendment 2**

Supplement 9 to the original version of the Regulation: Date of entry into force:  
19 August 2010

#### **Uniform provisions concerning the approval of:**

- I. Specific components of motor vehicles using compressed natural gas (CNG) in their propulsion system;**
- II. Vehicles with regard to the installation of specific components of an approved type for the use of compressed natural gas (CNG) in their propulsion system**



UNITED NATIONS

---

\* Former title of the Agreement: Agreement Concerning the Adoption of Uniform Conditions of Approval and Reciprocal Recognition of Approval for Motor Vehicle Equipment and Parts, don't at Geneva on 20 March 1958.

*Insert a new paragraph 17.9.4., to read:*

“17.9.4. For vehicles of categories M<sub>2</sub>, M<sub>3</sub>, N<sub>2</sub> and N<sub>3</sub><sup>1</sup>, the filling unit (receptacle) shall comply with the drawing specifications detailed in Figure 2 of Annex 4F or with the drawing specifications detailed in Figure 1 of Annex 4F”.

*Annex 4F,*

*Paragraph 2.1., amend to read:*

“2.1. The filling unit shall comply with the requirements laid down in paragraph 3. and shall have the dimensions of paragraph 4.”

*Paragraph 2.2., amend to read (including the insertion of a new footnote 2):*

“2.2. Filling units designed in accordance with ISO 14469-1 first edition 2004-11-01<sup>1</sup> or ISO 14469-2:2007<sup>2</sup> and meeting all the requirements therein are deemed to fulfill the requirements of paragraphs 3. and 4. of this annex.

---

<sup>2</sup> Road vehicles — Compressed natural gas (CNG) refueling connector — Part 2: 20 MPa (200 bar) connector, size 2”

*Paragraph 4.1., footnote 2 should be renumbered as footnote 3*

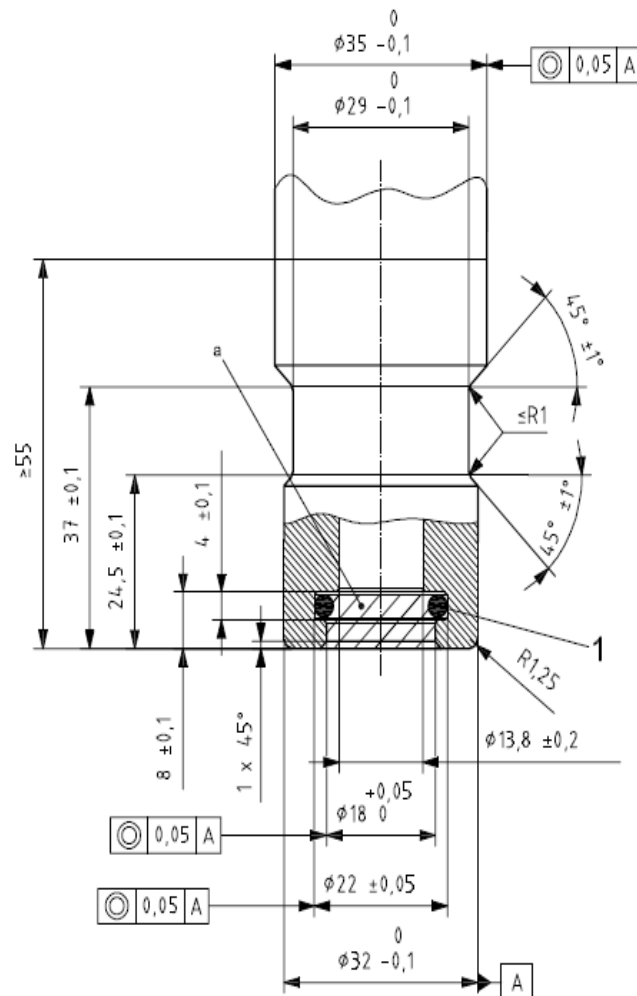
*Insert a new paragraph 4.2., to read:*

“4.2. Figure 2 shows the dimensions of the filling unit for vehicles of categories M<sub>2</sub>, M<sub>3</sub>, N<sub>2</sub> and N<sub>3</sub><sup>3</sup>”

Insert, after Figure 1, a new Figure 2, to read:


“Figure 2  
 20 MPa Filling unit Size 2 (receptacle) for M<sub>2</sub>, M<sub>3</sub>, N<sub>2</sub> and N<sub>3</sub> vehicles

Dimensions in millimetres



**Key**

1 sealing ID =  $\varnothing 15,47 \pm 0,1$  width =  $\varnothing 3,53 \pm 0,2$

<sup>a</sup> This area shall be kept free of all components 

Surface roughness < Ra 3,2  $\mu\text{m}$ .

Sealing surface finish: 0,8  $\mu\text{m}$  to 0,05  $\mu\text{m}$ .

Material hardness: 75 Rockwell B (HRB 75) minimum.

»